



QUALITY ASSESSMENT AND PERFORMANCE IMPROVEMENT PROGRAM (QAPIP) 2019

Prepared By: MSHN Quality Manager - November 2018

Reviewed and Approved By: Quality Improvement Council - January 24, 2019

Reviewed By: MSHN Leadership - March 13, 2019

Reviewed By: MSHN Operations Council – April 15, 2019

Reviewed By: Regional Medical Directors – May 03, 2019

Approved and Approved By: MSHN Board – May 07, 2019

TABLE OF CONTENTS

SECTION ONE - ANNUAL PLAN	4
I. Overview	4
II. Philosophical Framework	4
III. Quality and Compliance	6
a) Structure.....	6
b) Components.....	6
c) Governance.....	7
d) Communication of Process and Outcomes.....	10
e) Medicaid Event Verification.....	10
f) Quantitative and Qualitative Assessment of Member Experiences & Satisfaction Survey.....	11
IV. Provider Network	12
a) Credentialing, Provider Qualification and Selection.....	12
b) Provider Monitoring.....	12
c) Event Monitoring and Reporting.....	13
V. Clinical	14
a) Oversight of “Vulnerable People”	14
b) Cultural Competency.....	14
VI. Utilization Management	15
a) Utilization Management Plan.....	15
b) Autism Benefit.....	16
c) Behavior Treatment.....	16
d) Practice Guidelines.....	17
e) Performance Measures.....	17
VII. Definitions	22

SECTION ONE – ANNUAL PLAN

QUALITY ASSESSMENT AND PERFORMANCE IMPROVEMENT PROGRAM 2018-2019

I. OVERVIEW

Mid-State Health Network (MSHN) is a regional entity, which was formed pursuant to 1974 P.A. 258, as amended, MCL §330.1204b, as a public governmental entity separate from the CMHSP Participants that established it. The CMHSP Participants formed Mid-State Health Network to serve as the prepaid inpatient health plan (“PIHP”) for the twenty-one counties designated by the Michigan Department of Health and Human Services as Region 5. The CMHSP Participants include Bay-Arenac Behavioral Health, Clinton-Eaton-Ingham Community Mental Health Authority, Community Mental Health for Central Michigan, Gratiot Integrated Health Network, Huron County Community Mental Health Authority, LifeWays Community Mental Health Authority, Montcalm Care Network, Newaygo County Community Mental Health Authority, Saginaw County Community Mental Health Authority, Shiawassee Health and Wellness, The Right Door and Tuscola Behavioral Health Systems. In January 2014, MSHN entered into its first contract with the State of Michigan for Medicaid funding, and entered into subcontracts with the CMHSPs in its region for the provision of Mental Health, Substance Use Disorder, and Developmental Disabilities services. The contract was expanded in 2014 to include an expanded Medicaid benefit, the Healthy Michigan Plan. The FY2015 contract expanded to include administration of all public funding for substance use disorder (SUD) prevention, treatment and intervention. For FY2018, MSHN continues to sub-contract with CMHSPs within the region to provide Medicaid funded behavioral health services as well as directly contracting with Substance Use Disorder Providers within the region for the provision of all public funded SUD services.

MSHN monitors the overall quality and improvement of the PIHP. Responsibilities of the Quality Management Program are outlined in the Quality Assessment and Performance Improvement Plan (QAPIP). The scope of MSHN’s QAPIP program is inclusive of all CMHSP Participants, the Substance Use Disorder Providers and their respective provider networks. Performance monitoring covers all important organizational functions and aspects of care and service delivery systems. Performance monitoring is accomplished through a combination of well-organized and documented retained, contracted and delegated activities. Where performance monitoring activities are contracted or

delegated, MSHN assures monitoring of reliability and compliance.

II. PHILOSOPHICAL FRAMEWORK

The program design is based on the Continuous Quality Improvement (CQI) model of Shewhart, Deming and Juran. The key principles of the CQI model, as recently updated by Richard C. Hermann ("Developing a Quality Management System for Behavioral Health Care: The Cambridge Health Alliance Experience", November 2002), are:

- Health care is a series of processes in a system leading to outcomes;
- Quality problems can be seen as the result of defects in processes;
- Quality improvement efforts should draw on the knowledge and efforts of individuals involved in these processes, working in teams;
- Quality improvement work is grounded in measurement, statistical analysis and scientific method;
- The focus of improvement efforts should be on the needs of the customer; and
- Improvement should concentrate on the highest priority problems.

Performance improvement is more narrowly defined as, "the continuous study and adaptation of health care organization's functions and processes to increase the probability of achieving desired outcomes, and to better meet the needs of clients and other users of services" (The Joint Commission, 2004-2005). MSHN employs the Plan-Do-Study-Act (PDSA) cycle, attributed to Walter Shewhart and promulgated by Dr. W. Edwards Deming, to guide its performance improvement tasks (Scholtes P. R., 1991).

Performance measurement is a critical component of the PDSA cycle. Measures widely used by MSHN for the ongoing evaluation of processes, and to identify how the region can improve the safety and quality of its operations, are as follows:

- A variety of qualitative and quantitative methods are used to collect data about performance;
- Well-established measures supported by national or statewide databases are used where feasible and appropriate to benchmark desired performance levels; if external data is not available, then local benchmarks are established;
- Statistically reliable and valid sampling, data collection and data analysis principles are followed as much as possible; and
- If the nature of the data being collected for a measure limits the organization's ability to control variability or subjectivity, the conclusions drawn based upon the data are likewise limited.

Data is used for decision making throughout the PIHP and its behavioral health contract

providers through monitoring treatment outcomes, ensuring timeliness of processes, optimizing efficiency and maximizing productivity and utilizing key measures to manage risk, ensure safety, and track achievement of organizational strategies. MSHN's overall philosophy governing its local and regional quality management and performance improvement can be summarized as follows:

- Performance improvement is dynamic, system-wide and integrated;
- The input of a wide-range of stakeholders – board members, advisory councils, consumers, providers, employees, community agencies and other external entities, such as the Michigan Department of Health and Human Services, are critical to success;
- An organizational culture that supports reporting errors and system failures, as the means to improvement, and is important and encouraged;
- Improvements resulting from performance improvement must be communicated throughout the organization and sustained; and
- Leadership must establish priorities, be knowledgeable regarding system risk points, and act based upon sound data.

III. QUALITY AND COMPLIANCE

- a) **STRUCTURE** (Medicaid Managed Specialty Supports and Services Concurrent 1915 (b)/(c) Waiver Program - Attachment P7.9.1, 2019) (42 Code of Federal Regulations (CFR) 438.358, 2002)

The structure of the QAPIP allows each contracted behavioral health provider to establish and maintain its own unique arrangement for monitoring, evaluating, and improving quality. The MSHN Quality Improvement Council, under the direction of the Operations Council, is responsible for ensuring the effectiveness of the QAPIP. Process improvements will be assigned under the auspices of MSHN to an active PIHP council, committee, workgroup or task specific Process Improvement Team.

- b) **COMPONENTS** (Medicaid Managed Specialty Supports and Services Concurrent 1915 (b)/(c) Waiver Program - Attachment P7.9.1, 2019) (42 Code of Federal Regulations (CFR) 438.358, 2002)

MSHN will provide oversight and monitoring of all members of its contracted behavioral health network in compliance with applicable regulatory guidance. For the purposes of the Quality Management functions germane to successful PIHP operations, the following core elements shall be delegated to the Community Mental Health Services Programs and

SUD Providers within the region:

- Implementation of Compliance Monitoring activities as outlined in the MSHN Corporate Compliance Plan
- Develop and Implementation of Quality Improvement Program in accordance with PIHP Quality Assessment and Performance Improvement Plan
- Staff Oversight and Education
- Conducting Research (if applicable)

MSHN will provide guidance on standards, requirements and regulations from the MDHHS, the External Quality Review, the Balanced Budget Act, and/or other authority that directly or indirectly affects MSHN PIHP operations.

MSHN will retain responsibility for developing, maintaining, and evaluating an annual QAPIP plan and report in collaboration with its CMHSP Participants and Substance Use Disorder Providers. MSHN will comply with 42 CFR Program Integrity Requirements, including designating a PIHP Compliance Officer. Assurances for uniformity and reciprocity are as established in MSHN provider network policies and procedures (Region 5 PIHP 2013 Application for Proposal for Specialty Prepaid Inpatient Health Plans, 2013, p. 2.7.3).

- c) **GOVERNANCE** (Medicaid Managed Specialty Supports and Services Concurrent 1915 (b)/(c) Waiver Program - Attachment P7.9.1, 2019)

Board of Directors

The MSHN's Board of Directors employs the Chief Executive Officer (CEO), sets policy related to quality management, and approves the PIHP's QAPIP, including quality management priorities as identified in this plan. The QAPIP Plan is evaluated and updated annually, or as needed, by the MSHN Quality Improvement Council.

Through the Operations Council, Substance Use Disorder Oversight Policy Board and MSHN CEO, the MSHN's Board of Directors receives an Annual Quality Assessment and Performance Improvement Report evaluating the effectiveness of the quality management program and recommending priorities for improvement initiatives for the next year. The report describes quality management activities, performance improvement projects, and actions taken and the result of those actions. After review of the Annual Quality Assessment and Performance Improvement Report, through the MSHN CEO the Board of Directors submits the report to the Michigan Department of

Health and Human Services (MDHHS).

Chief Executive Officer

MSHN's CEO is hired/appointed by the PIHP Board and is the designated senior official with responsibility for ensuring implementation of the regional QAPIP. The MSHN CEO has designated the Quality Manager as the chair of the MSHN Quality Improvement Council. In this capacity, the Quality Manager under the direction of the Director of Compliance, Customer Service and Quality, is responsible for the development, review and evaluation of the Quality Assessment and Performance Improvement Plan and Program in collaboration with the MSHN Quality Improvement Council.

The MSHN CEO allocates adequate resources for the quality management program and is responsible for linking the strategic planning and operational functions of the organization with the quality management functions. The CEO assures coordination occurs among members of the Operations Council to maintain quality and consumer safety. Additionally, the CEO is committed to the goals of the quality improvement plan and to creating an environment that is conducive to the success of quality improvement efforts, ensuring affiliation involvement, removing barriers to positive outcomes, and monitoring results of the quality improvement program across the PIHP. The CEO reports to the PIHP Board of Directors recommending policies and/or procedures for action and approval. The CEO is responsible for managing contractual relationships with the CMHSP Participants and Substance Use Disorder Providers and for issuing formal communications to the CMHSP Participants/SUD Providers regarding performance that does not meet contractual requirements or thresholds. Similarly, the CEO is responsible for assuring ongoing monitoring and compliance with its MDHHS contract including provision of performance improvement plans as required.

Medical Director

Through consultative council involvement, the MSHN Medical Director provides leadership related to clinical service quality and service utilization standards and trends. The Medical Director is an ad hoc member of the MSHN Quality Improvement Council and demonstrates an ongoing commitment to quality improvement; participating on committees and work teams as needed, reviewing quality improvement reports, sentinel events, and critical incidents; and assisting in establishing clinical outcomes for the PIHP.

The MSHN Medical Director consults with MSHN staff regarding service utilization and eligibility decisions and is available to provide input as required for the regional QAPIP. As necessary, consultation occurs between the MSHN Medical Director and CMHSP Participant and Substance Use Disorder Medical Directors.

CMHSP Participants/SUD Providers

A quality representative from each CMHSP is appointed by the CMHSP CEO to participate in the MSHN Quality Improvement Council. Substance Use Disorders services is represented on the Council by MSHN SUD Staff. CMHSP Participant/SUD Provider staff have the opportunity to participate in and to support the QAPIP through organization wide performance improvement initiatives. In general, the CMHSP Participant/SUD Provider staff's role in the PIHP's performance improvement program includes:

- Participating in the data collection related to performance measures/indicators at the organizational or provider level;
- Identifying organization-wide opportunities for improvement;
- Having representation on organization-wide standing councils, committees and work groups, and
- Reporting clinical care errors, informing consumers of risks, and making suggestions to improve the safety of consumers.

Councils and Committees

MSHN has Councils and Committees that are responsible for providing recommendations and reviewing regional policy's regarding related managed care operational decisions. Each council/committee develops and annually reviews and approves a charter that identifies the following; Purpose, Decision Making Context and Scope, Defined Goals, Monitoring, Reporting and Accountability, Membership, Roles and Responsibilities Meeting Frequency, Member Conduct and Rules, Past Year's Accomplishments and Upcoming Goals. The Operations Council approves all council/committee charters. Each council/committee guides the Operations Council who advises the MSHN CEO. These recommendations are considered by the Operations Council on the basis of obtaining a consensus or simple majority vote of the twelve CMHSPs. Any issues remaining unresolved after Operations Council consideration will be subject to a vote with the minority position being communicated to the MSHN Board. The MSHN CEO retains authority for final decisions or for recommending action to the MSHN Board.

Among other duties, these councils/committees identify, receive, and respond on a regular basis to opportunities and recommendations for system improvements arising from the MSHN Quality Assessment and Performance Improvement Program and reports annually on the progress of accomplishments and goals.

SUD Oversight Policy Board

Pursuant to section 287 95) of Public Act 500 of 2012, MSHN established a Substance Use Disorder Oversight Policy Board (OPB) through a contractual agreement with and membership appointed by each of the twenty-one counties served. The SUD-OPB is responsible to approve an annual budget inclusive of local funds for treatment and

prevention of substance use disorders; and serves to advise the MSHN Board on other areas of SUD strategic priority, local community needs, and performance improvement opportunities.

Practitioners- SUD-Provider Advisory Workgroup

PAW is charged with serving in an advisory capacity to MSHN to offer input regarding SUD policies, procedures, strategic planning, monitoring and oversight processes, to assist MSHN with establishing and pursuing state and federal legislative, policy and regulatory goals, and to support MSHN's focus on evidence-based, best practice service and delivery to persons served.

Recipients (Medicaid Managed Specialty Supports and Services Concurrent 1915 (b)/(c) Waiver Program- Attachment P7.9.1, 2019)

MSHN continues the legacy of its founding CMHSP Participants by promoting and encouraging active consumer involvement and participation within the PIHP, the respective CMHSPs and their local communities. MSHN has formed a Regional Consumer Advisory Council that will be the primary source of consumer input to the MSHN Board of Directors related to the development and implementation of Medicaid specialty services and supports requirements in the region.

Recipients of services participate in the QAPIP through involvement on workgroups, process improvement teams, advisory boards and Quality Improvement (QI) Councils at the local and regional level. Recipients provide input into policy and program development, performance indicator monitoring, affiliation activities/direction, self-determination efforts, QI projects, satisfaction findings, consumer advocacy, local access and service delivery, and consumer/family education, etc.

In addition to the participation of recipients of services in quality improvement activities, MSHN and the CMHSP Participants/ SUD Providers strive to involve other stakeholders including but not limited to providers, family members, community members, and other service agencies whenever possible and appropriate. Opportunities for stakeholder participation include the PIHP governing body membership; Consumer Advisory activities at the local, regional and state levels; completion of satisfaction surveys; participation on quality improvement work teams or monitoring committees; and focus group participation.

Stakeholder input will be utilized in the planning, program development, and evaluation of services, policy development, and improvement in service delivery processes.

d) COMMUNICATION OF PROCESS AND OUTCOMES (Medicaid Managed Specialty Supports and Services Concurrent 1915 (b)/(c) Waiver Program - Attachment

P7.9.1, 2019)

The Quality Improvement Council (QIC) is responsible for monitoring and reviewing performance measurement activities. MSHN, in addition to the CMHSPs Participants/SUD Providers, identify and monitor opportunities for process and outcome improvements.

For any performance measure that falls below regulatory standards and/or established targets, plans of correction are required. After QIC meetings, reports are communicated through regular reporting via Councils, Committees, and the Board of Directors and Consumer Advisory Council meetings. Status of key performance indicators, consumer satisfaction survey results, and performance improvement (PI) projects are reported to consumers and stakeholders, as dictated by the data collection cycle. The Board of Directors receives an annual report on the status of organizational performance. Final performance and quality reports are made available to stakeholders and the general public as requested and through routine website updates.

MSHN is responsible for reporting the status of regional PI projects and verification of Medicaid services to MDHHS. These reports summarize regional activities and achievements, and include interventions resulting from data analysis.

- e) **MEDICAID EVENT VERIFICATION** (Medicaid Managed Specialty Supports and Services Concurrent 1915 (b)/(c) Waiver Program - Attachment P7.9.1, 2019 and Medicaid Event Verification Technical Requirement-Attachment P.6.4.1)

MSHN has established a written policy and procedure for conducting site reviews to provide monitoring and oversight of the Medicaid and Healthy Michigan funded claims/encounters submitted within the Provider Network. MSHN verifies the delivery of services billed to Medicaid and Healthy Michigan in accordance with federal regulations and the state technical requirement.

Medicaid Event Verification for Medicaid and Healthy Michigan Plan includes testing of data elements from the individual claims/encounters to ensure the proper code is used for billing; the eligibility of the beneficiary on the date of service; that the service provided is part of the beneficiaries individualized plan of service (and provided in the authorized amount, scope and duration); services were provided by a qualified individual; the amount billed/paid does not exceed the contract amount; and appropriate modifiers were used following the HCPCS guidelines.

Data collected through the Medicaid Event Verification process is aggregated, analyzed and reported for review at the QI Council meetings, and opportunities for improvements at the local or regional level are identified. The findings from this process, and any follow up needed, are reported annually to MDHHS through the Medicaid Event Verification Service Methodology Report. All CMHSP Participants/SUD Providers of MSHN have implemented the generation of a summary of Explanations of Benefits in accordance with the MDHHS Specialty Mental Health Services Program contract. This will provide an additional step to ensure that consumers are aware of service activity billed to their insurance.

f) QUANTITATIVE AND QUALITATIVE ASSESSMENT OF MEMBER EXPERIENCES
(Medicaid Managed Specialty Supports and Services Concurrent 1915 (b)/(c)
Waiver Program - Attachment P7.9.1, 2019)

The opinions of consumers, their families and other stakeholders are essential to identify ways to improve processes and outcomes. Surveys and focus groups are an effective means to obtain input on both qualitative and quantitative experiences. Consumers receiving services funded by the PIHP are surveyed by MSHN at least annually using standardized survey tools. The tools vary in accordance with service population needs, and address quality, availability, and accessibility of care. Focus groups are conducted as needed to obtain input on specific issues. Consumers may also be queried by the CMHSP Participants/SUD Providers regarding the degree of satisfaction via periodic reviews of the status of their person-centered plans, as well as during discharge planning for the cessation or transition of services. Other stakeholders provide input through a survey process. Regional benchmarks are used for comparison.

The aggregated results of the surveys are collected, analyzed and reported by MSHN in collaboration with the QI Council and Regional Consumer Advisory Council, who identify strengths, areas for improvement and make recommendations for action and follow up as appropriate. The data is used to identify best practices, demonstrate improvements, or identify problem areas. The QI Council determines appropriate action for improvements, and the resulting findings are incorporated into program improvement action plans. At the CMHSP Participant/SUD Provider level, actions is taken on survey results of individual cases, as appropriate, to identify and investigate sources of dissatisfaction and follow-up.

Survey results are included in the annual PIHP QAPIP Report and presented to the MSHN governing body, accessible on the MSHN website, the Operations Council, Regional Consumer Advisory Council, CMHSP Participants and SUD Providers. Findings are also shared with stakeholders on a local level through such means as advisory councils,

staff/provider meetings and printed materials.

IV. PROVIDER NETWORK

a) CREDENTIALING, PROVIDER QUALIFICATION AND SELECTION (Medicaid Managed Specialty Supports and Services Concurrent 1915 (b)/(c) Waiver Program - Attachment P7.9.1, 2019)

In compliance with MDHHS's Credentialing and Re-Credentialing Processes (FY19 Attachment P7.1.1, FY19 Attachment PII.B.A), MSHN has established written policy and procedures for ensuring appropriate credentialing and re-credentialing of the provider network. Whether directly implemented, delegated or contracted, MSHN shall ensure that credentialing activities occur upon employment/contract initiation, and minimally every two (2) years thereafter. MSHN written policies and procedures also ensure that non-licensed providers of care or support are qualified to perform their jobs.

Credentialing, privileging, primary source verification and qualification of staff who are employees of MSHN, or under contract to the PIHP, are the responsibility of MSHN. Credentialing, privileging, primary source verification and qualification of CMHSP Participant/SUD Provider staff and their contractors is delegated to the CMHSP Participants/SUD Providers. MSHN monitors CMHSP Participant and SUD Provider compliance with federal, state, and local regulations and requirements annually through an established process including desk review, site review verification activities and/or other appropriate oversight and compliance enforcement strategies.

MSHN policies and procedures are established to address the selection, orientation and training of directly employed or contracted staff. PIHP employees receive annual reviews of performance and competency. Individual competency issues are addressed through staff development plans. MSHN is responsible for ensuring that each provider, employed and contracted, meets all applicable licensing, scope of practice, contractual, and Medicaid Provider Manual requirements, including relevant work experience and education, and cultural competence. The CMHSP Participants/SUD Providers are likewise responsible for the selection, orientation, training and evaluation of the performance and competency of their own staff and subcontractors.

b) PROVIDER MONITORING (Medicaid Managed Specialty Supports and Services Concurrent 1915 (b)/(c) Waiver Program - Attachment P7.9.1, 2019)

MSHN uses a standard written contract to define its relationship with CMHSP Participants/SUD Providers that stipulated required compliance with all federal and state requirements, including those defined in the Balance Budget Act (BBA), the Medicaid

Provider Manual, and the master contract between the PIHP and MDHHS.

Each CMHSP Participant/SUD Provider is contractually required to ensure that all eligible recipients have access to all services required by the master contract between the PIHP and MDHHS, by either direct service provision or the management of a qualified and competent provider panel. Each CMHSP Participant/SUD Provider is also contractually required to maintain written subcontracts with all organizations or practitioners on its provider panel. These subcontracts shall require compliance with all standards contained in the BBA, the Medicaid Provider Manual, and the Master Contract between the PIHP and the MDHHS.

Each CMHSP Participant/SUD Provider is required to document annual monitoring of each provider subcontractor as required by the BBA and MDHHS. The monitoring structure shall include provisions for requiring corrective action or imposing sanctions, up to and including contract termination if the contractor's performance is inadequate. MSHN continually works to assure that the CMHSP Participants/SUD Provider maintain common policies, review common standards, and evaluate common outcomes. MSHN monitors compliance with federal and state regulations annually through a process that includes any combination of desk review, site review verification activities, and/or other appropriate oversight and compliance enforcement strategies as necessary. MSHN has developed a process for coordinating and/or sharing annual contractor monitoring reviews to avoid duplication of efforts and to reduce the burden on shared contractors. CMHSPs Participants/SUD Providers that are unable to demonstrate acceptable performance are required to provide corrective action, will be subject to additional PIHP oversight and interventions, and may be subject to sanctions imposed by MSHN, up to and including contract termination.

c) EVENT MONITORING AND REPORTING (Medicaid Managed Specialty Supports and Services Concurrent 1915 (b)/(c) Waiver Program - Attachment P7.9.1, 2018)

MSHN submits and/or reports required events to MDHHS such as critical incidents (including sentinel events), and events requiring immediate notification as specified in the Medicaid Managed Specialty Supports Services contract within the timelines required by MDHHS.

MSHN delegates the responsibility of the process for review and follow-up of sentinel events, critical incidents, and other events that put people at risk of harm to its CMHSP Participants and SUD Providers. Adverse Events include any event that is inconsistent with or contrary to the expected outcomes of the organization's functions that warrants

PIHP review. Subsets of these events, adverse events, will qualify as "reportable events" according to the MDHHS Event Reporting System. These include MDHHS defined critical incidents, risk events, and sentinel events. MSHN also ensures that each CMHSP Participant/SUD Provider has a system in place to monitor these events, utilizing staff with appropriate credentials for the scope of care, and within the required timeframes. MSHN will ensure that the CMHSP and SUD Provider have taken appropriate action to ensure that any immediate safety issues have been addressed.

MSHN provides oversight and monitoring of the CMHSP Participant/SUD Provider processes for reporting sentinel events, critical events, and risk events as defined in the Medicaid Managed Specialty Supports and Service Concurrent 1915 (b)/(c) Waiver Program FY19 Attachment P7.9.1 and/or events requiring immediate notification to MDHHS. In addition, MSHN oversees the CMHSP Participant/SUD Provider process for quality improvement efforts including analysis of all events and other risk factors, identified patterns or trends, the completion of identified actions, and recommended prevention strategies for future risk reduction. The goal of reviewing these events is to focus the attention of the CMHSP Participant/SUD Provider on potential underlying causes of events so that changes can be made in systems or processes in order to reduce the probability of such events in the future. Following completion of a root cause analysis, or investigation, the CMHSP will develop and implement either a plan of action or an intervention to prevent further occurrence or recurrence of the adverse event, or documentation of the rationale for not pursuing an intervention.

The plan shall address the staff and/or program/committee responsible for implementation and oversight, time lines, and strategies for measuring the effectiveness of the action

V. CLINICAL

- a) OVERSIGHT OF "VULNERABLE PEOPLE"** (Medicaid Managed Specialty Supports and Services
Concurrent 1915 (b)/(c) Waiver Program - Attachment P7.9.1, 2019)

MSHN assures the health and welfare of the region's service recipients by establishing standards consistent with MDHHS contract requirements and reporting guidelines for all CMHSPs and subcontracted providers. Each CMHSP Participant/SUD Provider shall have processes for addressing and monitoring the health, safety and welfare of all individuals served.

MSHN ensures that services are consistently provided in a manner that considers the

health, safety, and welfare of consumers, family, providers and other stakeholders. When health and safety, and/or welfare concerns are identified, those concerns will be acknowledged, and actions taken as appropriate. MSHN monitors population health through data analytics software to identify adverse utilization patterns and to reduce health disparities.

MSHN monitors compliance with federal and state regulations annually through a process that may include any combination of desk review, site review verification activities and/or other appropriate oversight and compliance enforcement strategies as necessary. CMHSP organizations and SUD Providers that are unable to demonstrate acceptable performance may be subject to additional PIHP oversight and intervention.

b) CULTURAL COMPETENCY

MSHN and its Provider Network shall demonstrate an ongoing commitment to linguistic and cultural competence that ensures access and meaningful participation for all people in the service area. Such commitment includes acceptance and respect for the cultural values, beliefs and practices of the community, as well as the ability to apply an understanding of the relationships of language and culture to the delivery of supports and services.

Competence includes a general awareness of the cultural diversity of the service area including race, culture, religious beliefs, regional influences in addition to the more typical social factors such as gender, gender identification, sexual orientation, marital status, education, employment and economic factors, etc.

VI. UTILIZATION MANAGEMENT

a) UTILIZATION MANAGEMENT PLAN (Medicaid Managed Specialty Supports and Services Concurrent 1915 (b)/(c) Waiver Program - Attachment P7.9.1, 2019)

MSHN ensures access to publicly funded behavioral health services in accordance with the Michigan Department of Health and Human Services contracts and relevant Medicaid Provider Manual and Mental Health Code requirements.

MSHN directly or through delegation of function to the CMHSP Participants/SUD Providers acting on its behalf, is responsible for the overall network's utilization management (UM) system. Each CMHSP Participant/SUD Provider is accountable for carrying out delegated UM functions and/or activity relative to the people they serve through directly operated or contracted services.

Initial approval or denial of requested services is delegated to CMHSP Participants/SUD

Providers, including the initial screening and authorization of psychiatric inpatient services, partial hospitalization, and initial and ongoing authorization of services for individuals receiving community services. All service authorizations are based on medical necessity decisions that establish the appropriate eligibility relative to the identified services to be delivered. Communication with individuals regarding UM decisions, including adverse benefit determination notice, right to second opinion, and grievance and appeals will be included in this delegated function.

Utilization review functions are delegated to CMHSP Participants/SUD Providers in accordance with MSHN policies, protocols and standards. This includes local-level prospective, concurrent and retrospective reviews of authorization and utilization decisions and/or activities regarding level of need and level and/or amount of services, consistent with PIHP policy, standards, and protocols. A Regional Utilization Management Committee comprised of each CMHSP Participant assists in the development of standards and reviews/analyzes region-wide utilization activity and trends.

MSHN ensures that screening tools and admission criteria are based on eligibility criteria established in contract and policy and are reliably and uniformly administered. MSHN policies are designed to integrate system review components that include PIHP contract requirements and the CMHSP Participant's/SUD Provider roles and responsibilities concerning utilization management, quality assurance, and improvement issues.

MSHN has established criteria for determining medical necessity, and the information sources and processes that are used to review and approve provision of services.

MSHN has mechanisms to identify and correct under-and over-utilization of services as well as procedures for conducting prospective, concurrent, and retrospective reviews. MSHN ensures through policy and monitoring of the CMHSP Participants/SUD Providers that qualified health professionals supervise review decisions and decisions to deny or reduce services are made by health care professionals who have the appropriate clinical expertise to provide treatment. Through policy and monitoring of CMHSP Participants/SUD Providers, MSHN shall ensure that reasons for treatment decisions are clearly documented and available to persons served; information regarding all available appeals processes and assistance through customer services is communicated to the consumer; and notification requirements are adhered to in accordance with the Medicaid Managed Specialty Supports and Services contract with the Michigan Department of Health and Human Services.

- b) AUTISM BENEFIT** (Medicaid Managed Specialty Supports and Services Early and Periodic Screening, Diagnosis and treatment (EPSDT) State plan Home and Community-Based Services Administration and Operation)

MSHN oversees provision of the autism benefit within its region. MSHN delegates to the CMHSPs the application of the policies, rules and regulations as established. MSHN assures that it maintains accountability for the performance of the operational, contractual, and local entity efforts in implementation of the autism program. MSHN tracks program compliance through the MSHN quality improvement Strategy and performance measures required by the benefit plan. MSHN collects data on the performance of the autism benefit consistent with the EPSDT state plan and reviews this data monthly to quarterly with the CMHSPs within its region and calls for ongoing system and consumer-level improvements. This data is shared with the MDHHS as required, for reporting individual-level and systemic-level CMHSP quality improvement efforts.

Autism Benefit Review

Re-evaluations shall address the ongoing eligibility of the autism benefit participants and are updated annually. All providers of ABA services shall meet credentialing standards as identified in the EPSDT benefit and Michigan Medicaid Manual to perform their function.

c) BEHAVIOR TREATMENT (Medicaid Managed Specialty Supports and Services Concurrent 1915 (b)(c) Waiver Program 2018 Attachment P1.4.1, Standards for Behavior Treatment Plan Review Committees-Revision FY17)

MSHN delegates the responsibility for the collection and evaluation of data to each local CMHSP Behavior Treatment Review Committee, including the evaluation of the effectiveness of the Behavior Treatment Committee by stakeholders. Data is collected and reviewed quarterly by the CMHSP where intrusive and restrictive techniques have been approved for use with individuals, and where physical management or 911 calls to law enforcement have been used in an emergency behavioral situation. Only techniques approved by the Standards of Behavior Treatment Plan, agreed to by the individual or his/her guardian during the person-centered planning, and supported by current peer-reviewed psychological and psychiatric literature may be used. MSHN also receives CMHSP behavior treatment data regarding consumers on the habilitation supports waiver. This data has been piloted and tracked in the MSHN region and provides sub-assurances within participant safeguards that require additional oversight & monitoring by the Michigan Department of Health and Human Services (MDHHS) for habilitation supports waiver enrollees around use of intrusive and/or restrictive techniques for behavioral control. By asking the behavior treatment committees to track these data, it provides important oversight to the protection and safeguard of vulnerable individuals. This data is analyzed on a quarterly basis by MSHN and is available to MDHHS upon request. CMHSP data is reviewed as part of the CMHSP Quality Program and reported to the MSHN QIC at a defined frequency. MSHN analyzes the data on a quarterly basis to address any

trends and/or opportunities for quality improvements. MSHN also uses this data to provide oversight via the annual site review process at each of the CMHSPs. Data shall include numbers of interventions and length of time the interventions were used per person.

d) PRACTICE GUIDELINES (Medicaid Managed Specialty Supports and Services Concurrent 1915 (b)/(c) Waiver Program - Attachment P7.9.1, 2019)

MSHN supports CMHSP Participants local implementation of practice guidelines based on the Medicaid Provider Manual, the Medicaid Managed Specialty Supports and Services Concurrent 1915 (b)/(c) Waiver Program, and Evidence Based Practice models. The process for determining what practice guidelines were utilized is a locally driven process in collaboration with the MSHN Councils and Committees. Practice guidelines are chosen to meet the needs of persons served in the local community and to ensure that everyone receives the most efficacious services. Practice guidelines as stated above are reviewed and updated annually or as needed and are disseminated to appropriate providers.

e) PERFORMANCE MEASUREMENT

General Methods (Medicaid Managed Specialty Supports and Services Concurrent 1915 (b)/(c) Waiver Program - Attachment P7.9.1, 2019)

The Quality Assessment and Performance Improvement Program encourages the use of objective and systematic forms of measurement. Each established measure should align with MSHN's goals and priorities and needs to have clear expectations, promote transparency, and be accountable through ongoing monitoring.

Measures can be clinical and non-clinical. Desired performance ranges and/or external benchmarks are included when known. MSHN is responsible for the oversight and monitoring of the performance of the PIHP including data collection, documentation, and data reporting processes to ensure compliance with PIHP contract requirements and State and Federal processes and requirements.

Establishing Performance Measures:

The measures established should reflect the organizational priorities, have a baseline measurement when possible, have an established re-measurement frequency (at least annually) and should be actionable and likely to yield credible and reliable data over time.

Information is the critical product of performance measurement that facilitates clinical

decision-making, organizational decision-making (e.g., strategic planning and day-to-day operations), performance improvement, and priorities for risk reduction. Data must be systematically aggregated and analyzed to become actionable information.

Data Collection and Setting Performance Targets:

Data is aggregated at a frequency appropriate to the process or activity being studied. Statistical testing and analysis is then used as appropriate to analyze and display the aggregated data. PIHP data is analyzed over time to identify patterns and trends, and compared to desired performance levels, including externally derived benchmarks when available.

When a performance measure has an established performance target set through contract requirements, then that target will be utilized to measure performance. If there is no set performance target, baseline data should be considered prior to setting a target. Baseline data is a snapshot of the performance of a process or outcome that is considered normal, average, or typical over a period. The baseline may already be established through historical data or may still need to be collected. If baseline data is not available for an established measure, then the measure should be implemented for a period of time (typically up to one year) prior to establishing performance targets. When collecting baseline data, it is important to establish a well-documented, standardized and accurate method of collecting the data and set ongoing frequencies to review the data (monthly, quarterly, etc.)

Once the baseline has been established for a measure, it can be determined if a performance target should be established or not. If the baseline data is at or above the state and national benchmarks, when available, and deemed within acceptable standards, it is up to the monitoring committee or team to determine if a performance measure should be established or if the measure should just continue to be monitored for variances in the baseline data. If the baseline data is below the state and national benchmarks, when available, then a performance target should be established that is at, or greater than, the state and national average.

When establishing performance targets, the following should be considered (as defined in the Health Resources and Service Administration (HRSA) Quality Tool Kit):

- a) *Minimum or Acceptable Level.* Performance standards can be considered "minimum" or "acceptable" levels of success.
- b) *Challenge Level.* This level defines a goal toward which efforts are aimed. Performance results below this level are acceptable because the level is a challenge that is not expected to be achieved right away.

- c) *Better Than Before.* The performance measurement process is comparative from measurement period to measurement period. Success is defined as performance better than the last period of measurement. This definition comes out of the continuous quality improvement (CQI) perspective.

Targets may be defined in several ways including the following:

- a) Defining a set target percentage for achievement – such as 75% will meet the outcome being measured
- b) Defining a percentage change for achievement – such as the percentage will increase by 10% over an established length of time

Data Analysis:

The data should be reviewed at the established intervals and analyzed for undesirable patterns, trends, or variations in performance. In some instances, further data collection and analysis may be necessary to isolate the causes of poor performance or excessive variability.

The appropriate council, committee, or workgroup, in collaboration with the QIC, will prepare a written analysis of the data, citing trends and patterns, including recommendations for further investigation, data collection improvements to resolve data validity concerns, and/or system improvements.

Region wide quality improvement efforts will be developed based on the patterns and trends identified and will be reviewed for effectiveness at established intervals within the appropriate MSHN council, committees, workgroups, etc. In some instances, provider level corrective action may be necessary in addition to, or in lieu of, region wide improvement efforts.

Performance Improvement Action Steps:

Process improvements are achieved by taking action based upon data collected and analyzed through performance measurement activities. Actions taken are implemented systematically to insure any improvements achieved are truly associated with the action. Adhering to the following steps promotes process integrity:

- Develop a step by step action plan;
- Limit the number of variables impacted;
- Implement the action plan, preferably on a small or pilot scale initially, and
- Collect data to check for expected results.

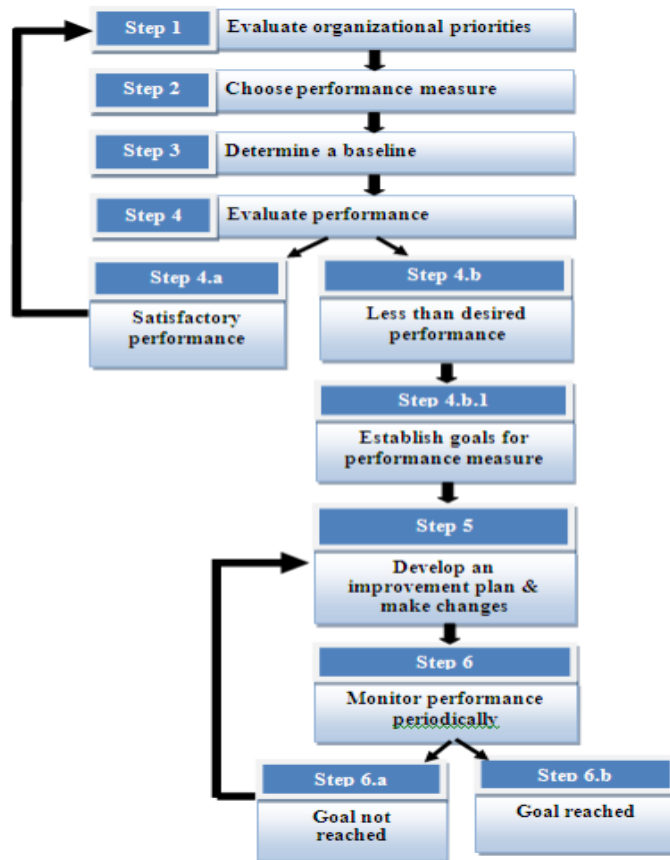
The process of measurement, data collection, data analysis and action planning is repeated until the desired level of performance/improvement is achieved. Sustained improvement is sought for a reasonable period of time (such as one year) before the measure is discontinued. When sustained improvement is achieved, measures move into a maintenance modality, with a periodic reassessment of performance to insure the desired level of quality is being maintained, as appropriate, unless the measure(s) mandated by external entities such as the MDHHS require further measurement and analysis.

When the established minimum performance standards or requirements are not met, CMHSP Participants/SUD Providers will submit a corrective action plan the includes the following:

- Causal factors that caused the variance (directly and/or indirectly)
- Interventions that will be implemented to correct the variance
- Timelines for when the action will be fully implemented
- How the interventions will be monitored
- Any other actions that will be taken to correct undesirable variation

The appropriate MSHN staff, council, committee, workgroup, etc. will monitor the implementation and effectiveness of the plans of correction. The effectiveness of the action plan will be monitored based on the re-measurement period identified.

Process Map of Performance Management Pathway (defined by HRSA)



Performance Indicators

The Michigan Department of Health and Human Services (MDHHS), in compliance with Federal mandates, establishes measures in the area of access, efficiency, and outcomes. Pursuant to its contract with MDHHS, MSHN is responsible for ensuring that its CMHSP Participants and Substance Use Disorder Providers are measuring performance through the use of standardized performance indicators.

When minimum performance standards or requirements are not met, CMHSP Participants/SUD Providers will submit a form identifying causal factors, interventions, implementation timelines, and any other actions they will take to correct undesirable variation. The form will be reviewed by the MSHN CO and the MSHN contractor to ensure sufficient corrective action planning. Regional trends will be identified and discussed at the QIC for regional planning efforts and coordination. The effectiveness of the action plan will be monitored based on the re-measurement period identified.

Performance Improvement Projects

MDHHS requires the PIHP to complete a minimum of two PI projects per year. One of the two is chosen by the department based on Michigan's Quality Improvement Council recommendations. This project is subject to validation by the external quality review (EQR) organization and requires the use of the EQR's form. The second or additional PI project(s) is chosen by the PIHP based on the needs of the population served, previous measurement and analysis of process, satisfaction, and/or outcome trends that may have an impact on the quality of service provided. The QIC approves the performance improvement projects and presents to relevant committees and councils for collaboration.

Data collected through the performance improvement projects are aggregated, analyzed and reported at the QIC meeting. The population from which a sample is pulled, the data collection timeframe, the data collection tool, and the data source are defined for each measure, whether local or regional. A description of Project/Study is written for each measure which documents why the project was chosen and identifies the data that was used to determine there was a problem and who is affected by the problem. It incorporates the use of valid standardized data collection tools and consistent data collection techniques. Each data collection description delineates strategies to minimize inter-rater reliability concerns and maximize data validity. Provisions for primary source verification of data and maintenance of documentation are also addressed in the description of the project/study. If sampling is used, appropriate sampling techniques are required to achieve a statistically reliable confidence level. The default confidence level for MSHN performance measurement activity is a 95% confidence level with a 5% margin of error.

Identification of Quality Concerns and Opportunities for Improvement

Measures are selected consistent with established MSHN QAPIP priorities, as specified in this plan. The PIHP quality management program uses a variety of means to identify system issues and opportunities for improvement.

Prioritizing Measures (Medicaid Managed Specialty Supports and Services Concurrent 1915 (b)/(c) Waiver Program - Attachment P7.9.1, 2019)

Measures are chosen based upon selection and prioritization of projects, data collection, and analysis of data, and will be based on the following three factors:

Focus Area: Clinical (prevention or care of acute or chronic conditions; high volume or high risk services; continuity and coordination of care), or Non-Clinical (availability, accessibility, and cultural competency or services;

interpersonal aspects of care; appeals, grievances, and other complaints.)

Impact: The effect on a significant portion of consumers served with potentially significant effect on quality of care, services, or satisfaction.

Compliance: Adherence to law, regulatory, or accreditation requirements; relevancy to stakeholders due to the prevalence of a condition, the need for a service, access to services, complaints, satisfaction, demographics, health risks or the interests of stakeholders as determined through qualitative and quantitative assessment.

VII. Definitions

Community Mental Health Services Program (CMHSP): A program operated under Chapter 2 of the Michigan Mental Health Code - Act 258 of 1974 as amended.

CMHSP Participant: refers to one of the twelve-member Community Mental Health Services Program (CMHSP) participant in the Mid-State Health Network.

Contractual Provider: refers to an individual or organization under contract with the MSHN Pre-Paid Inpatient Health Plan (PIHP) to provide administrative type services including CMHSP participants who hold retained functions contracts.

Customer: For MSHN purposes customer includes all Medicaid eligible individuals (or their families) located in the defined service area who are receiving or may potentially receive covered services and supports. The following terms may be used within this definition: clients, recipients, enrollees, beneficiaries, consumers, primary consumer, secondary consumer, individuals, persons served, Medicaid Eligible.

MMBPIS: Michigan Mission Based Performance Indicator System

MSHN: Mid-State Health Network

MDHHS: Michigan Department of Health and Human Services

Prepaid Inpatient Health Plan (PIHP): In Michigan a PIHP is defined as an organization that manages Medicaid specialty services under the state's approved Concurrent 1915(b)/1915(c) Waiver Program, on a prepaid, shared-risk basis, consistent with the requirements of 42 CFR part 401 et al June 14, 2002, regarding Medicaid managed care. (In Medicaid regulations, Part 438. Prepaid Health Plans (PHPs) that are responsible for inpatient services as part of a benefit package are now referred to as "PIHP" The PIHP also

known as a Regional Entity under MHC 330.1204b also manages the Autism ISPA, Healthy Michigan, Substance Abuse Treatment and Prevention Block Grant and PA2. "

Provider Network: Refers to a CMHSP Participant and all Behavioral Health Providers that are directly under contract with the MSHN PIHP to provide services and/or supports through direct operations or through the CMHSP's subcontractors.

Research: (as defined by 45 CFR, Part 46.102) means a systematic investigation, including research development, testing and evaluation, designed to develop or contribute to generalizable knowledge. Activities which meet this definition constitute research for purposes of this policy, whether they are conducted or supported under a program which is considered research for other purposes. For example, some demonstration and service programs may include research activities.

Subcontractors: Refers to an individual or organization that is directly under contract with CMHSP and/or SRE to provide services and/or supports.

SUD Providers: Refers to Substance Use Disorder providers directly contracted with MSHN to provide SUD treatment and prevention services.

(2019). *Medicaid Managed Specialty Supports and Services Concurrent 1915 (b)/(c) Waiver Program.*

(2019). *Medicaid Managed Specialty Supports and Services Concurrent 1915 (b)/(c) Waiver Program - Attachment P7.9.1*

(2013). *Region 5 PIHP 2013 Application for Proposal for Specialty Prepaid Inpatient Health Plans.*

(2004-2005). The Joint Commission. *Comprehensive Accreditation Manual for Behavioral Health Care.*

(May 13, 2011). *Michigan Department of Community Health (MDCH)/Prepaid Inpatient Health Plan (PIHP) Event Reporting v1.1, Data Exchange Workgroup-CIO-Forum.*

(2019). *Medicaid Managed Specialty Supports and Services Concurrent 1915 (b)/(c) Waiver Program 2019 Attachment P1.4.1, Standards for Behavioral Treatment Plan Review Committees-, Revision FY'17.*

(November 2002). "Developing a Quality Management System for Behavioral Health

Care: The Cambridge Health Alliance Experience". *Harvard Review of Psychiatry*.
(1991). Scholtes, P. R. In *The Team Handbook* (pp. 5-31). Madison, WI: Joiner Associates,
Inc.